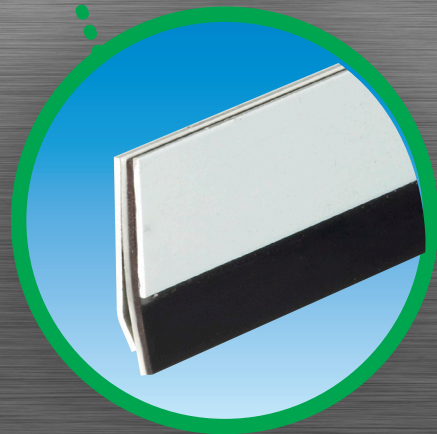
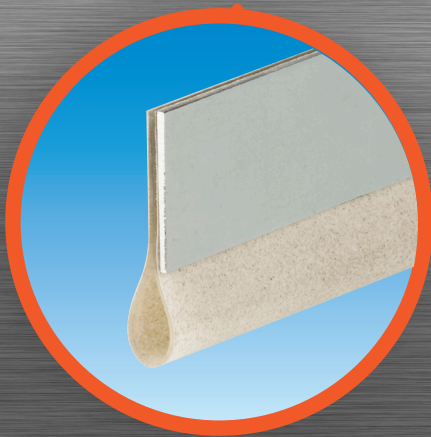
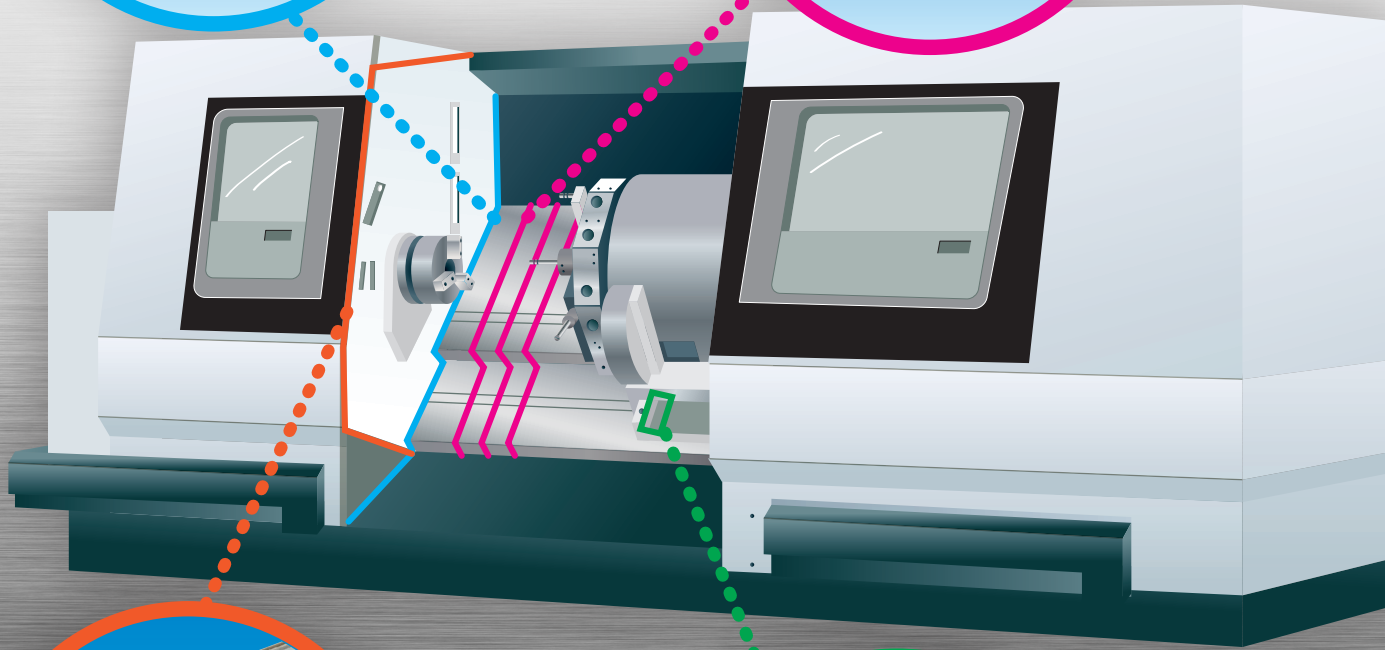
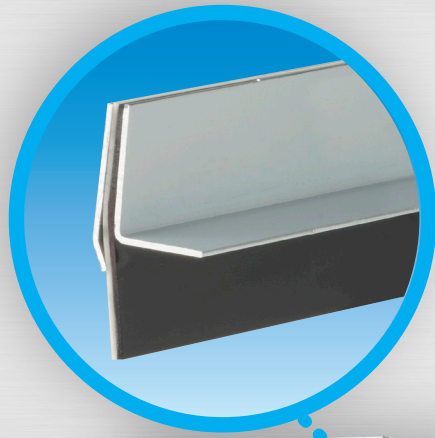


BANDO

WAY WIPER EDGE EX

SPECIAL POLYURETHANE MACHINE WAY WIPERS



BANDO

DESIGN

- Superior protection from hot chips, abrasive materials and cooling agents
- Abrasion resistant
- Less down time

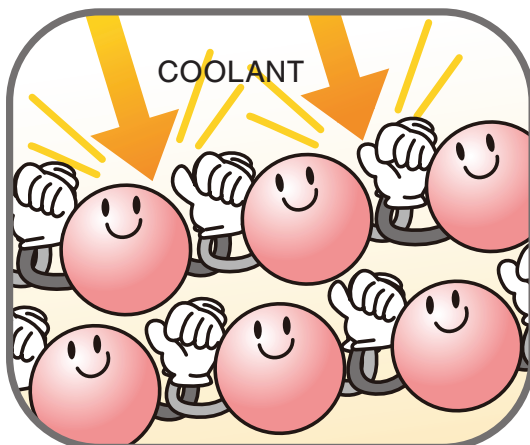
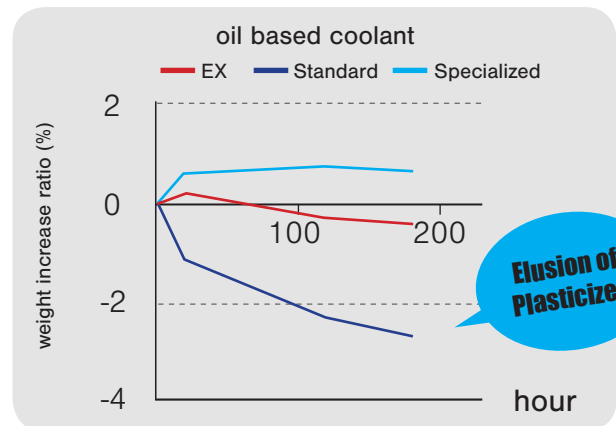
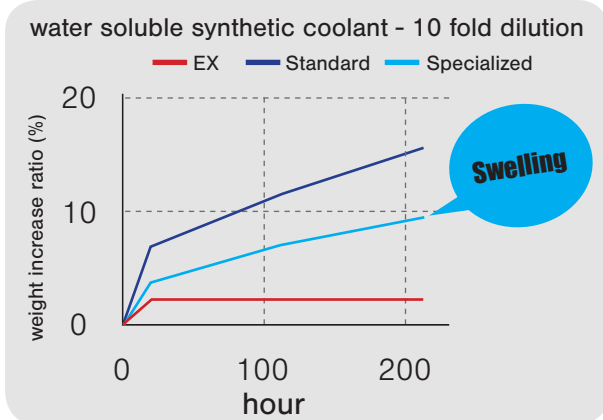
Base frame

Attachment frame

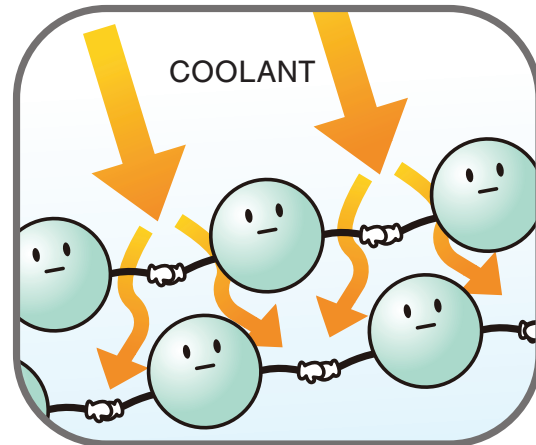
Protection cover

Special polyurethane material
low coefficient of friction

Coolant Resistance (test condition) 70° dipping



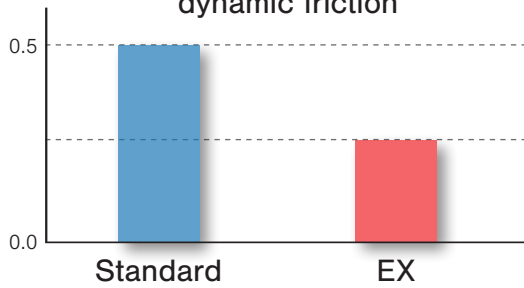
Bando Wiper Edge EX



Standard

ADVANTAGES

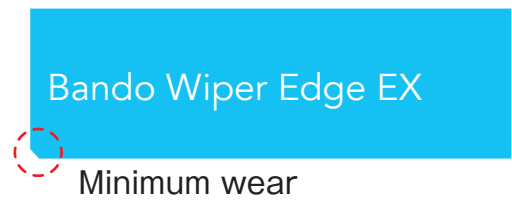
**Abrasion Resistance
(High-Speed Sliding Ability)**
dynamic friction



General Requirements for Wiper Blade

- Turning machine
 - Coolant Resistance
- Machining Center
 - High Speed Sliding Ability
 - > Bando Wiper Edge EX meets or exceeds customer's expectations

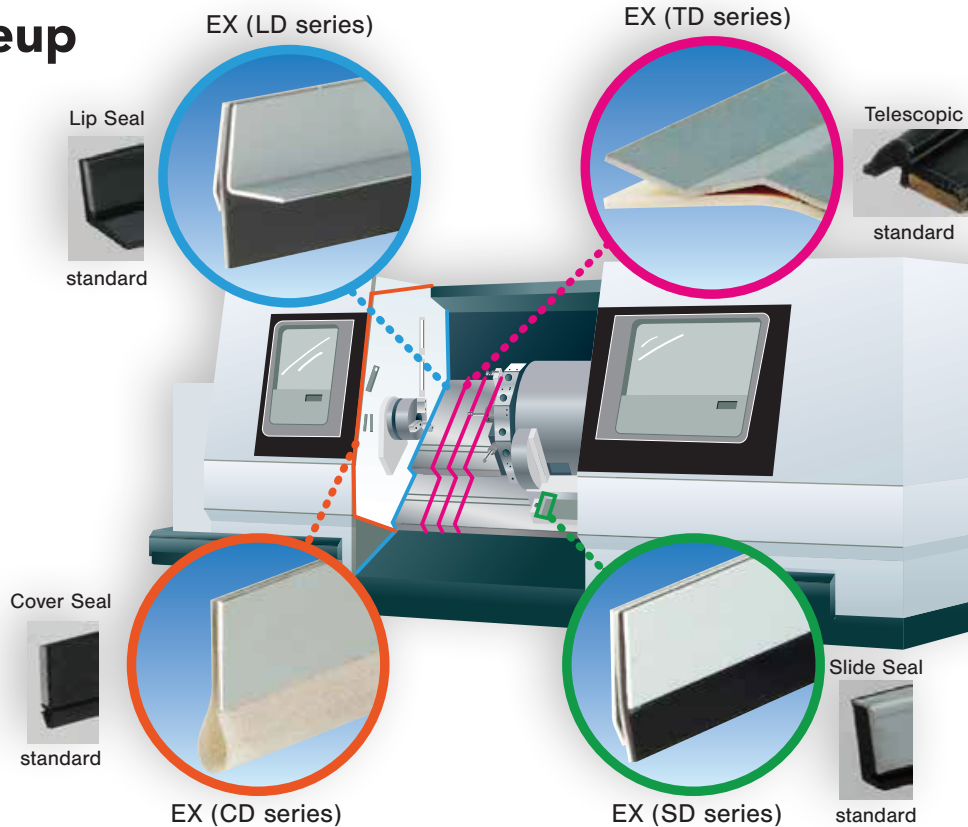
Long Life (Abrasion Resistance)



Test Condition

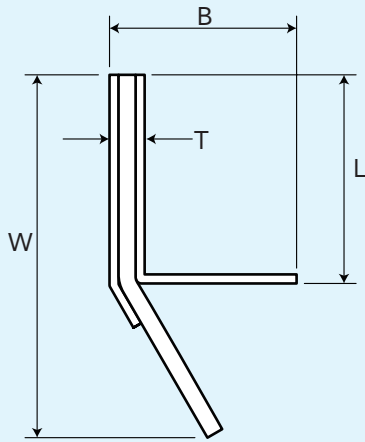
Chip: Aluminum
 Coolant: Moresco Neo Cool Bio-60E
 Movement Speed: 100m/min Recommended press fit width: 3.0 mm
 Running Distance: 300km (150,000 times of 1m back and forth motion)
 *Superior Abrasion Resistance

Lineup



PRODUCT LINE UP

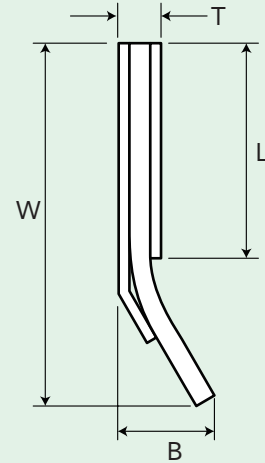
Lip Seal



unit (mm)

*1	W	B	L	T	*2
900	32	17	18	3	5

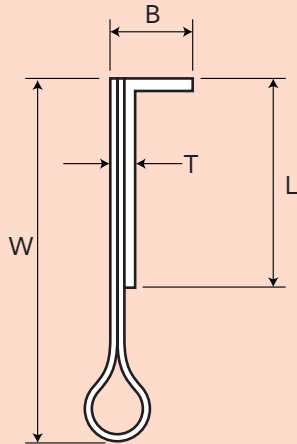
Slide Seal



unit (mm)

*1	W	B	L	T	*2
900	30	9	16	3	5

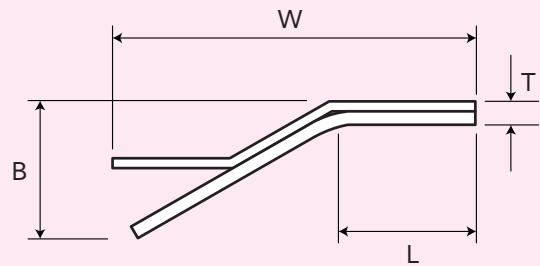
Cover Seal



unit (mm)

*1	W	B	L	T	*2
900	34	8	19	3	1

Telescopic Seal



unit (mm)

*1	W	B	L	T	*2
900	43	16	15	3	5

*1 Total Length

*2 Recommended press fit width

*Other sizes on request

Patent Pending



Customer Service: 1(800) 829-6612 | serviceexpress@bandousa.com | www.BandoUSA.com BUI 1051